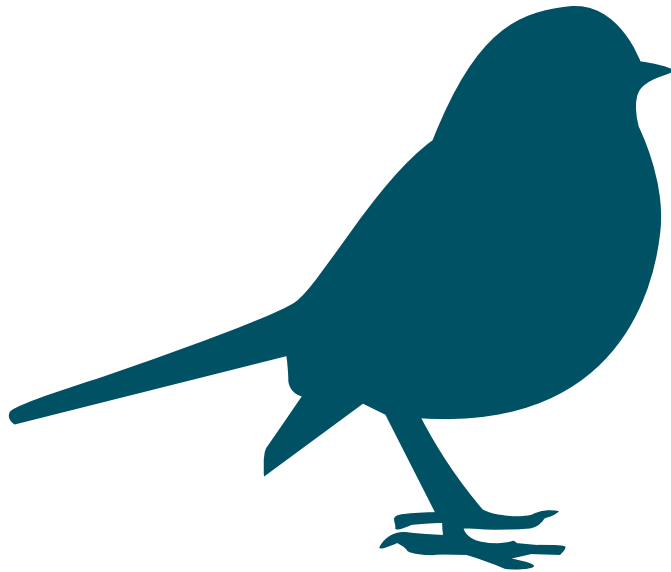




# Your how-to-guide and tally chart



**Big Garden  
Birdwatch**

**26–28 January 2024**

## Taking part is as easy as 1, 2, 3

- 1** **Count the birds you see in your garden, from your balcony or in your local park for one hour between 26 and 28 January 2024.**  
Use the tally boxes on the next page to count and record the birds you spot. Transfer your count to the results form. This chart shows some birds you might see. You may see others, if so record those on the results form too. Where we don't show male and female birds, the sexes look similar, but are not always identical.
- 2** **Following these simple rules makes it easy to count the birds you see.**  
Only include birds that land, not those flying over. Count the highest number of each species you see at any one time, otherwise you could count the same bird twice. For example, if you saw a group of eight Starlings but then towards the end of your hour you saw six together, record '8' as your final Starling count.
- 3** **Go online and tell us what you saw at [www.rspb.org.uk/birdwatch](http://www.rspb.org.uk/birdwatch)**  
Submitting online is quick and easy and it means we can spend more on saving nature as it reduces our costs. Whatever you saw – even if nothing at all – please tell us. The more results we have, the better the picture we will be of how garden birds are faring.  
  
If you are unable to submit your results online, please complete and send us the print-from-home form.

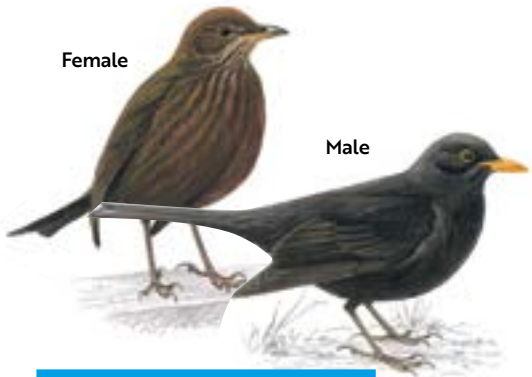
## Helping you make your Big Garden Birdwatch count

### Get involved on our social channels

Throughout the Big Garden Birdwatch long weekend, you can join in the conversation on our social channels. See what other nature lovers are spotting across the UK and you can upload pics and comments about your Birdwatch. Go to [#BigGardenBirdWatch](https://twitter.com/BigGardenBirdWatch)

### Get ID tips and expert advice

You'll find lots of advice on identifying birds by sight and sound, as well as expert insights into garden wildlife at [www.rspb.org.uk/birdwatch](http://www.rspb.org.uk/birdwatch)



Female

Male

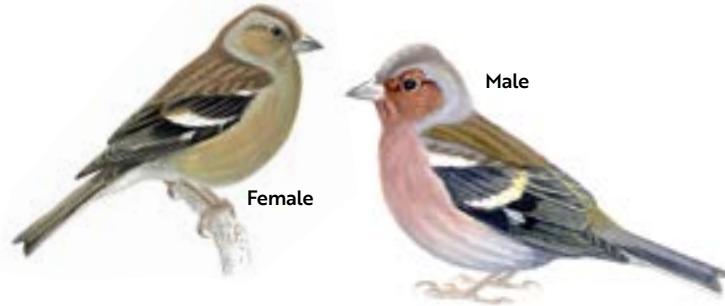
**Blackbird**

++++ +++++ +++++ +++++



**Blue Tit**

++++ +++++ +++++ +++++



Female

Male

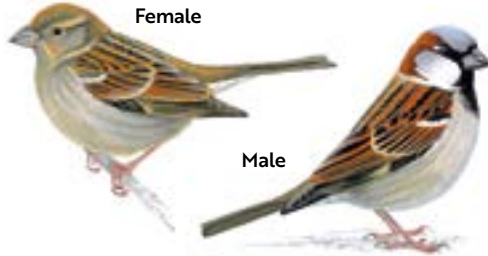
**Chaffinch**

++++ +++++ +++++ +++++



**Coal Tit**

++++ +++++ +++++ +++++



Female

Male

**House Sparrow**

++++ +++++ +++++ +++++



**Long-tailed Tit**

++++ +++++ +++++ +++++



**Collared Dove**

++++ +++++ +++++ +++++



**Dunnock**

++++ +++++ +++++ +++++



**Goldfinch**

++++ +++++ +++++ +++++



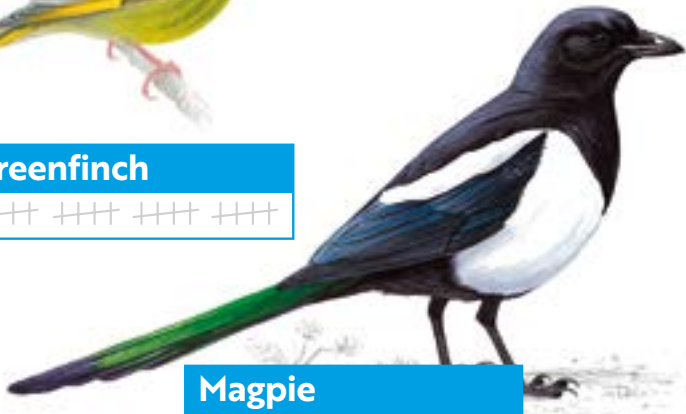
**Robin**

++++ +++++ +++++ +++++



**Greenfinch**

++++ +++++ +++++ +++++



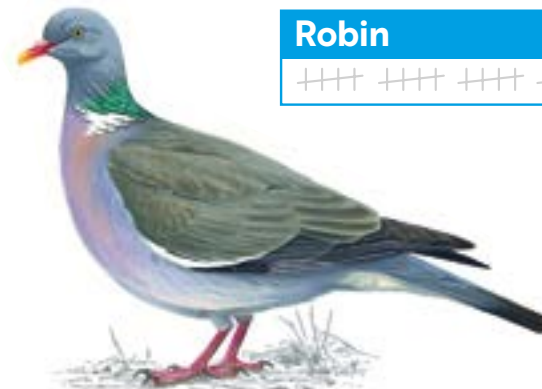
**Magpie**

++++ +++++ +++++ +++++



**Great Tit**

++++ +++++ +++++ +++++



**Woodpigeon**

++++ +++++ +++++ +++++



**Starling**

++++ +++++ +++++ +++++

Together, let's  
make it count

Connect to nature. Play your part.

Count me in

BWMNAM101



26–28 January 2024

# What will you see?

Enjoy an hour in nature and count the birds in your garden, from your balcony or in your local park.

## How to record your results

- 1 Count the birds for one hour in your garden, from your balcony or local park **between 26 and 28 January 2024**.
- 2 Record the total for each bird in the boxes on the count chart opposite.
- 3 Count the most birds of a particular species you see at any one time. So, if you see a group of eight Starlings, but later see six together, please write down eight as your final count.
- 4 If you don't see any of the birds on the chart, record '0' as your final count – it's important for us to know which birds are 'no shows'.
- 5 Only include birds that land, not those flying over.
- 6 Even if you saw nothing make sure you tell us, it still counts.

Name of bird	Most seen at one time
Blackbird	<input type="text"/>
Blue Tit	<input type="text"/>
Chaffinch	<input type="text"/>
Coal Tit	<input type="text"/>
Collared Dove	<input type="text"/>
Duncock	<input type="text"/>
Goldfinch	<input type="text"/>
Great Tit	<input type="text"/>
Greenfinch	<input type="text"/>
House Sparrow	<input type="text"/>
Long-tailed Tit	<input type="text"/>
Magpie	<input type="text"/>
Robin	<input type="text"/>
Starling	<input type="text"/>
Woodpigeon	<input type="text"/>
Other birds	<input type="text"/>

## Discover more about Birdwatch

You can simply use the chart opposite to take part, but if you would like to know more go to [www.rspb.org.uk/birdwatch](http://www.rspb.org.uk/birdwatch)

You'll find expert advice, tips and features on how to attract birds onto your patch for a successful Birdwatch.

And you can share pics and stories with the online Birdwatch community on social media using **#BigGardenBirdWatch**

The RSPB is a registered charity in England & Wales 207076, in Scotland SC037654, 356-23-24 BGBW-24

## Let's keep in touch on your terms

Thank you for taking action for nature.

We're working hard to do all we can to save it. You can play your own, very important part, which is why we'd love to let you know about the conservation, campaigning, research and fundraising work that we're doing.

If you're happy for the RSPB and RSPB Shop to keep in touch, please let us know how you would like to hear from us:

Post	<input type="checkbox"/> Yes please	<input type="checkbox"/> No thanks
Phone	<input type="checkbox"/> Yes please	<input type="checkbox"/> No thanks
Email	<input type="checkbox"/> Yes please	<input type="checkbox"/> No thanks
Text	<input type="checkbox"/> Yes please	<input type="checkbox"/> No thanks

You're in control. If you'd like to change your choices at a later date, all you have to do is call us on **01767 693680** or go to

[www.rspb.org.uk/preferences](http://www.rspb.org.uk/preferences). If you decide to stay in touch, we'll also keep you up to date with news about membership, products, offers and competitions. Your details will be kept safe and secure, only used by us, or those who work for us, and will not be shared with anyone else. We analyse information you provide, and about how you've helped us, to decide what communications will be of interest to you (and so that we can save our resources for conservation work) and to help us understand our supporters. We also use this information to run our charity's operations, e.g. if you place an order or make a donation, we'll need your details to process those. If you would like to know more or understand your data protection rights, please take a look at [www.rspb.org.uk/privacy/policy](http://www.rspb.org.uk/privacy/policy)

Please use CAPITAL letters.

Title (Mr, Mrs, Miss, Ms, Mx etc)	<input type="text"/>
First name	<input type="text"/>
Last name	<input type="text"/>
Your address	<input type="text"/>
Town	<input type="text"/>
County/Council area	<input type="text"/>
Postcode	<input type="text"/>
Mobile	<input type="text"/>
Email (over 18 only)	<input type="text"/>
Date of birth (if under 18)	<input type="text"/>
How many people took part?	Adults <input type="text"/>
If you didn't do your Big Garden Birdwatch at home, where did you do it? (if different from above)	Children <input type="text"/>

## How to submit your results

When you've done your Birdwatch, go to [www.rspb.org.uk/birdwatch](http://www.rspb.org.uk/birdwatch) quoting code **BH30** and submit your totals using the online results form. **Submit your results by 18 February 2024**.

If you'd rather send us your results by post, send this completed form to us in an envelope addressed **FREEPOST RSPB BIG GARDEN BIRDWATCH by 13 February 2024**. This is a short address, but it will definitely reach us.